



**EXPORT
RÅDET**
SWEDISH TRADE COUNCIL

DESIGN PROPOSAL

Version 1.0 | 2011-06-13 | © 2011 Muraya DCE

 **Muraya DCE**



DESIGN THOUGHTS UNFOLDED.

For The Swedish Trade Council's Tokyo office make-over we want to give it a more open feeling. A central open area with pantry, conference room and a terrace door opens up for combinations and possibilities for both socializing and business activities. Pantry for informal meetings and when combining pantry, conference room with terrace it makes it an interesting bigger space possible for housing events. Here is also the stairs placed to BSO offices located on second floor. An area with closed offices to be rent by companies that have become "teenagers" and need a private office space.

With the experience from a highly appreciated STC's Shanghai office we have used similar materials and design details although with a new "story".

Origami is a well-known design inspiration and with a strong connection to Japan as the little red horse, "dalahäst", has become a symbol for Sweden. So, we combined the two into one thought for Swedish Trade in Tokyo. An origami "dalahäst". Unfolded, it became the inspiration for the reception counter, flooring pattern and feature wall.

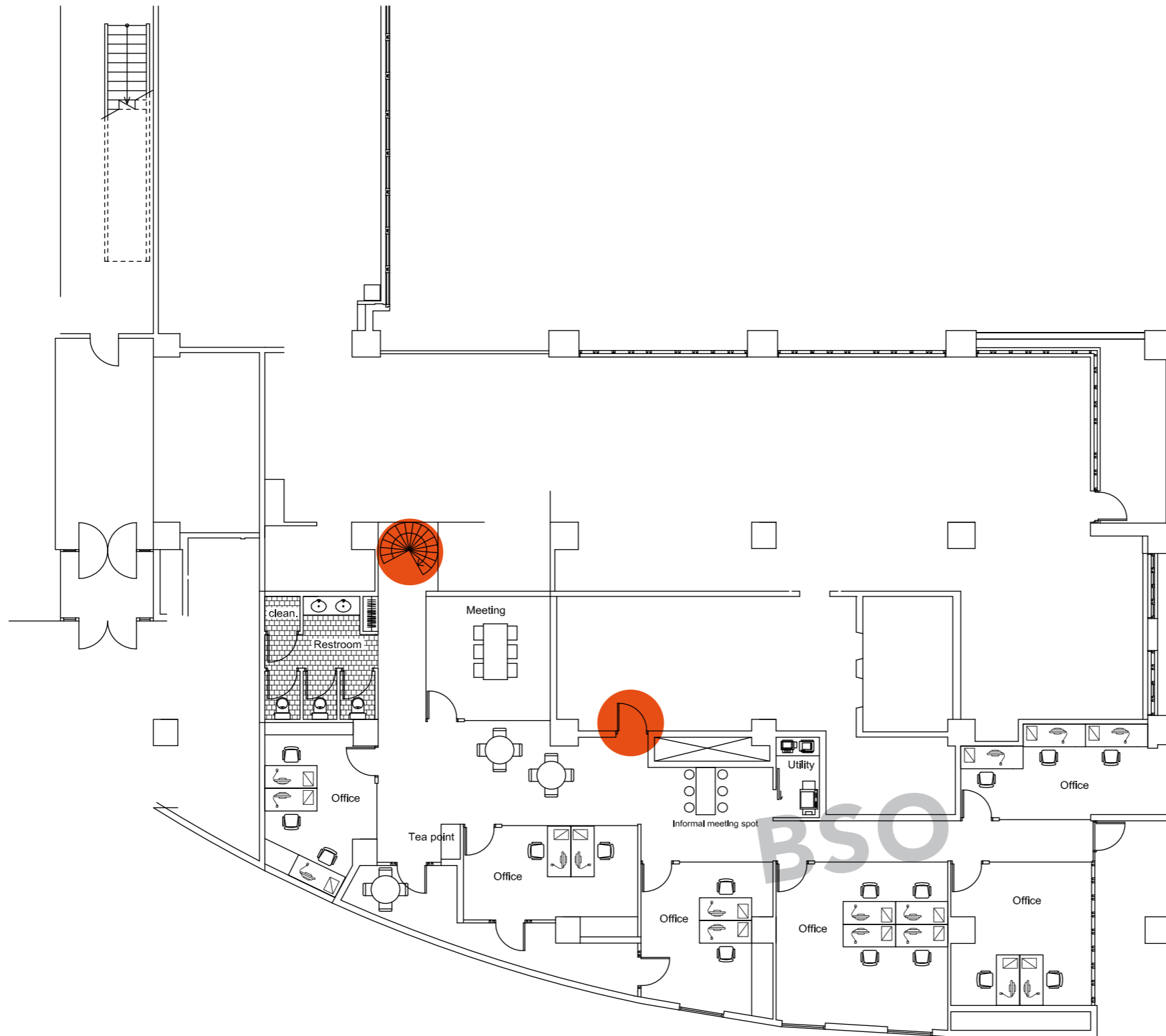
1ST FLOOR LAYOUT.

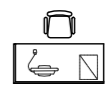


SUMMARY		
A 160x70 cm		
HEADCOUNTS		A
PUBLIC AREA	Reception	1
	Meeting Room	3
	Pantry	1
	Utility	2
STC	IT Room	1
	GM Room	1
	Staff	14
BSO	Phone Room	1
	Staff	12
	Finance	4

EXIT

2ND FLOOR LAYOUT.



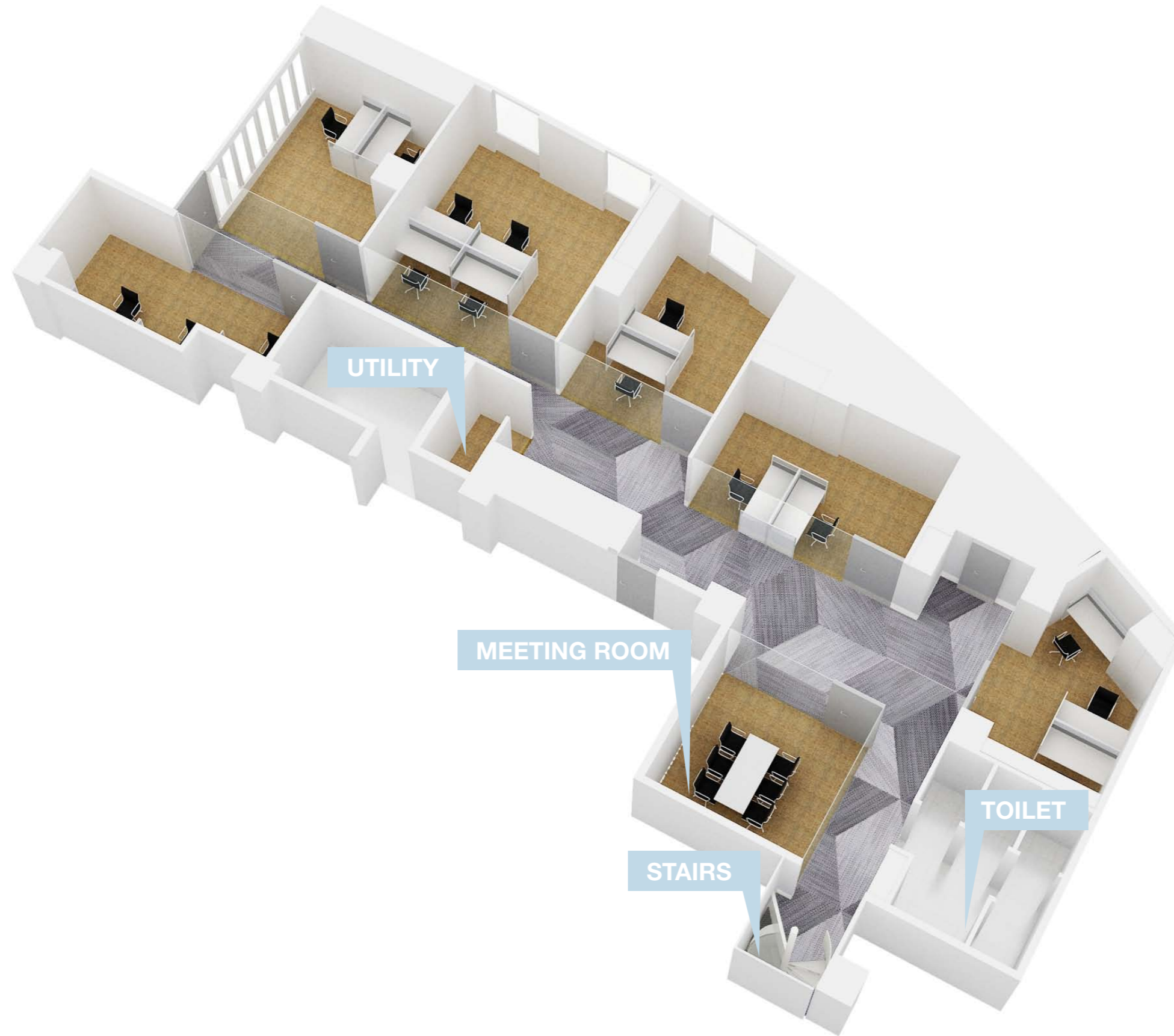
SUMMARY		
A 160x70 cm		
HEADCOUNTS		A
PUBLIC AREA	Meeting Room	1
	Utility	1
	Tea Point	1
BSO	Office	6
	Staff	16

 EXIT

1ST FLOOR BIRDVIEW.



2ND FLOOR BIRDVIEW.



RENDERING.

RECEPTION



RENDERING.

PANTRY/KITCHEN



RENDERING.

PANTRY/LOUNGE CORNER



RENDERING.

2F BSO OFFICE

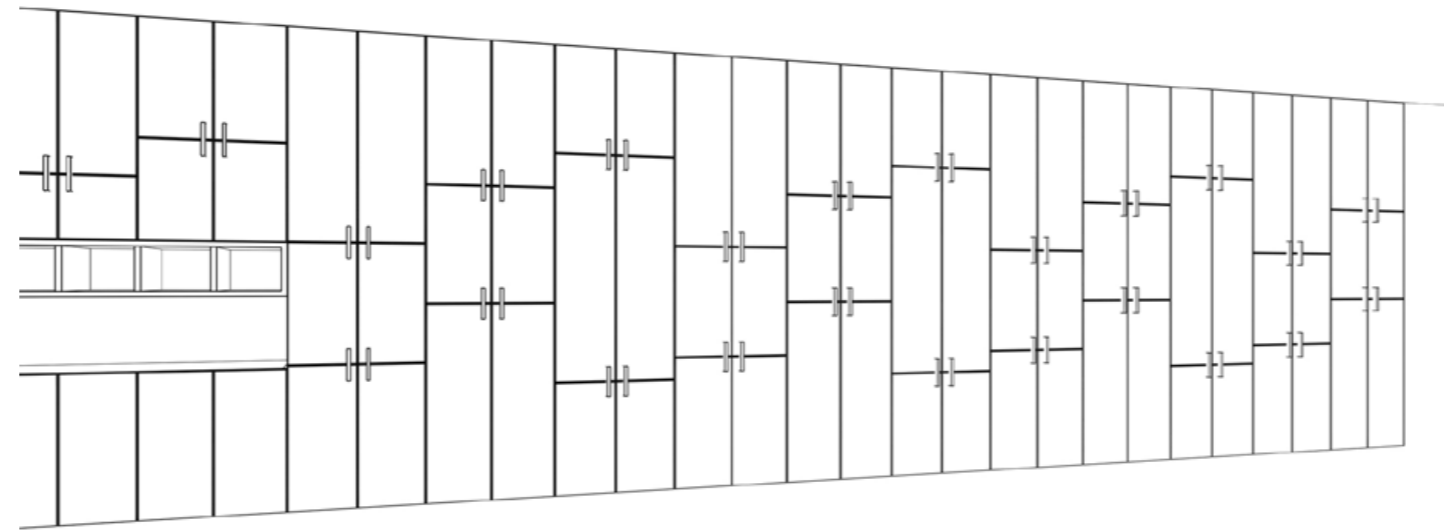


RENDERING.

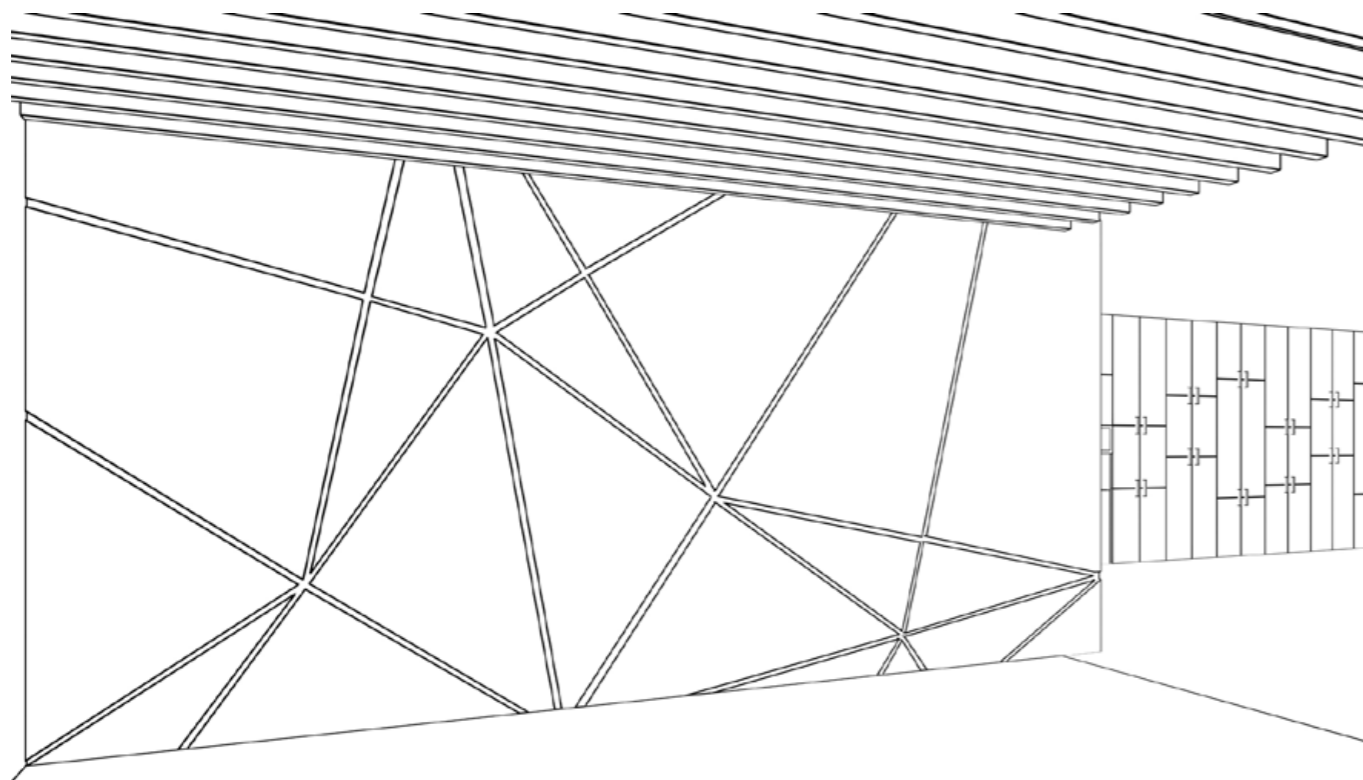
2F BSO MEETING ROOM



SKETCHES.

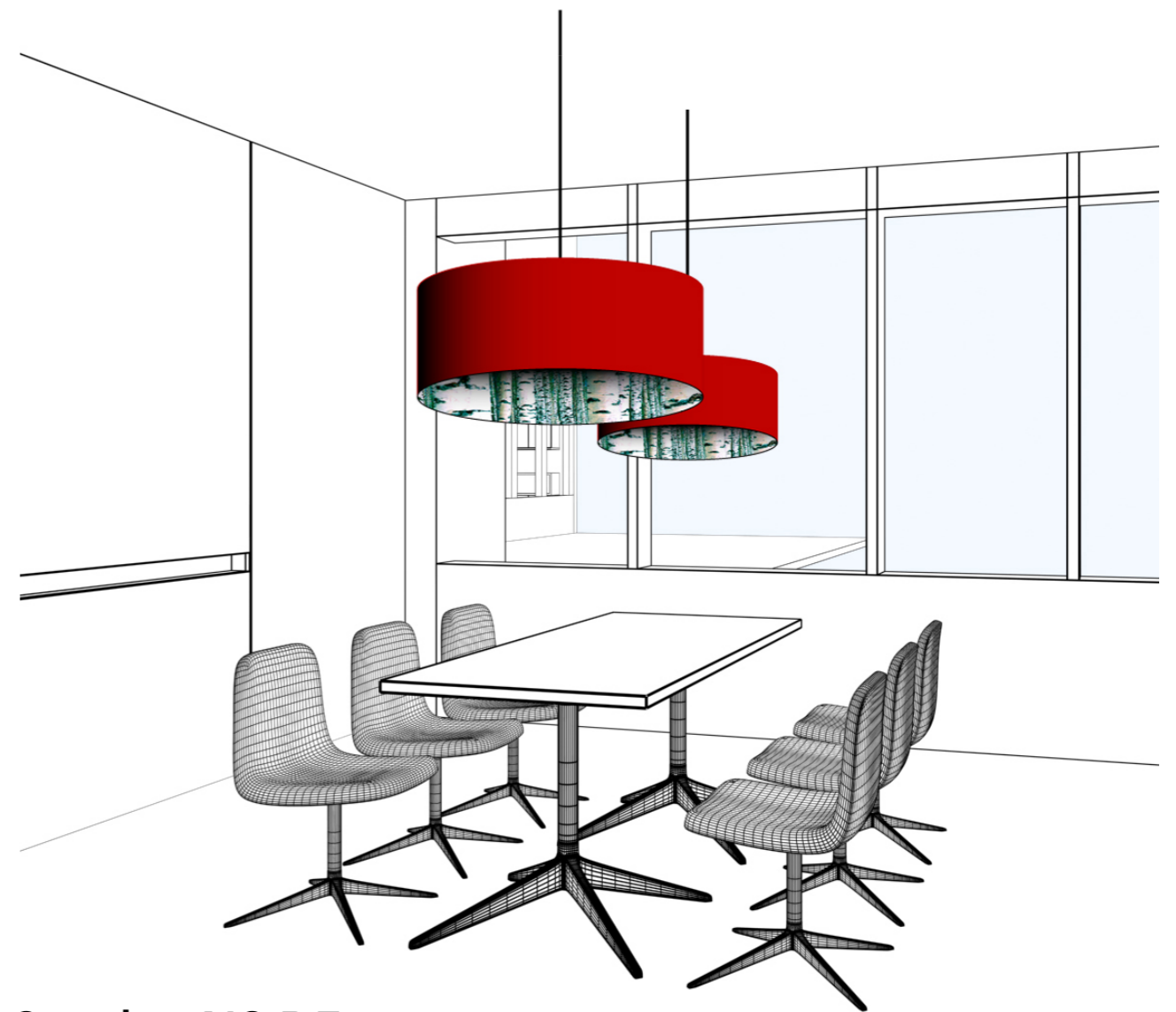


CABINET WALL



FEATURE WALL

Origami "dalahäst" unfolded, cut out in wood.



SwedenINSIDE

Meeting room lamps with Swedish nature images inside.

FINISHES.

1

2

3

- 1 Bolon carpet - open office/corridors
- 2 Sisal carpet - meeting rooms, GM room and 2F BSO offices
- 3 Wood floor - reception and pantry

FLOORING.



SISAL CARPET

Sisal carpet which is a kind of leaf fiber extracted from an Agave plant will meet your desire to design a new office that is both environmentally sustainable and aesthetically pleasing. Sisal elicits an immediate sense of warmth and simplicity.

BOLON – SWEDISH FLOORING

A Bolon flooring is exclusive, inviting and unique. The feeling of the textile is unmistakable – almost organic but the flooring, nevertheless, has all the advantages of vinyl: wear-resistant, easy to handle compared to textile floorings and simple to install. Bolon floorings are developed for public environments: hotels, offices, shops and other activities with high requirements to both financial and environmental costs, but without compromising on what is aesthetic and representative in the process.

PROJECT REFERENCE.

SWEDISH TRADE COUNCIL/SHANGHAI/1 000 m²



TACK/THANKS/ありがとう.

